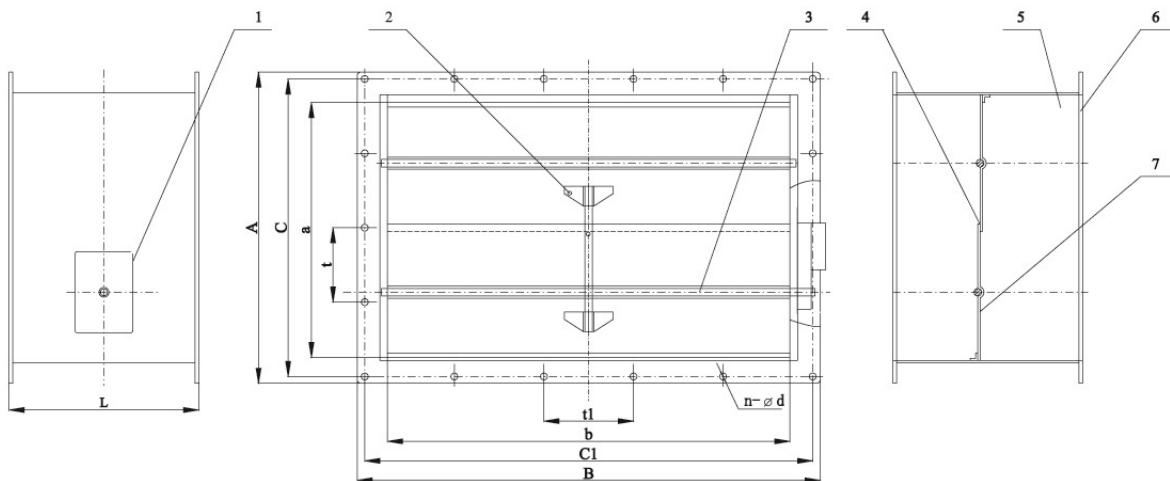


## GD TYPE GAS TIGHT DAMPER

### 1. Features:

The gas tight dampers are used in HVAC ducts that need gas tight. There are two control modes: electrical control and pneumatic control. The damper will open normally, if the power or compressed air is interrupt, the damper will close in two seconds. If the damper is closed the maximum leakage to the damper is  $5\text{m}^3/\text{m}^2\cdot\text{min}$  with a differential pressure of 2000Pa . The neoprene is made in corrosion resistant material, heat resistant to  $80^\circ\text{C}$

### 2. Outline Drawing



1.actuator 2.linkage 3.main axle 4.airproof mat 5.valve body 6.flange 7.valve plate

### 3. Type & Parameter

Type	axb	L	Flange size
VD-axb	100x100~800x800	>250	GB1561-79 According to GB1561-79

**Note:** Flange size of all fire dampers could be fabricated according to user's requirement.

**4. Our GD damper can be cranked out circular single blade or multi-blades, and the control type can be selected electrical or pneumatic.**